





AN OPULENT  
WONDERLAND,  
AN ENVIABLE  
DESTINATION

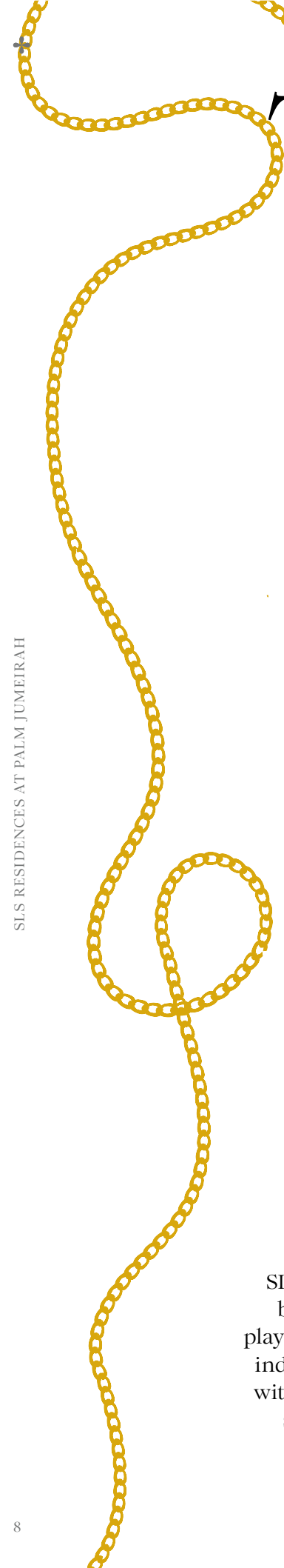


08-25  
THE  
WORLD OF SLS

26-41  
THE  
AMENITIES

42-79  
THE  
RESIDENCES

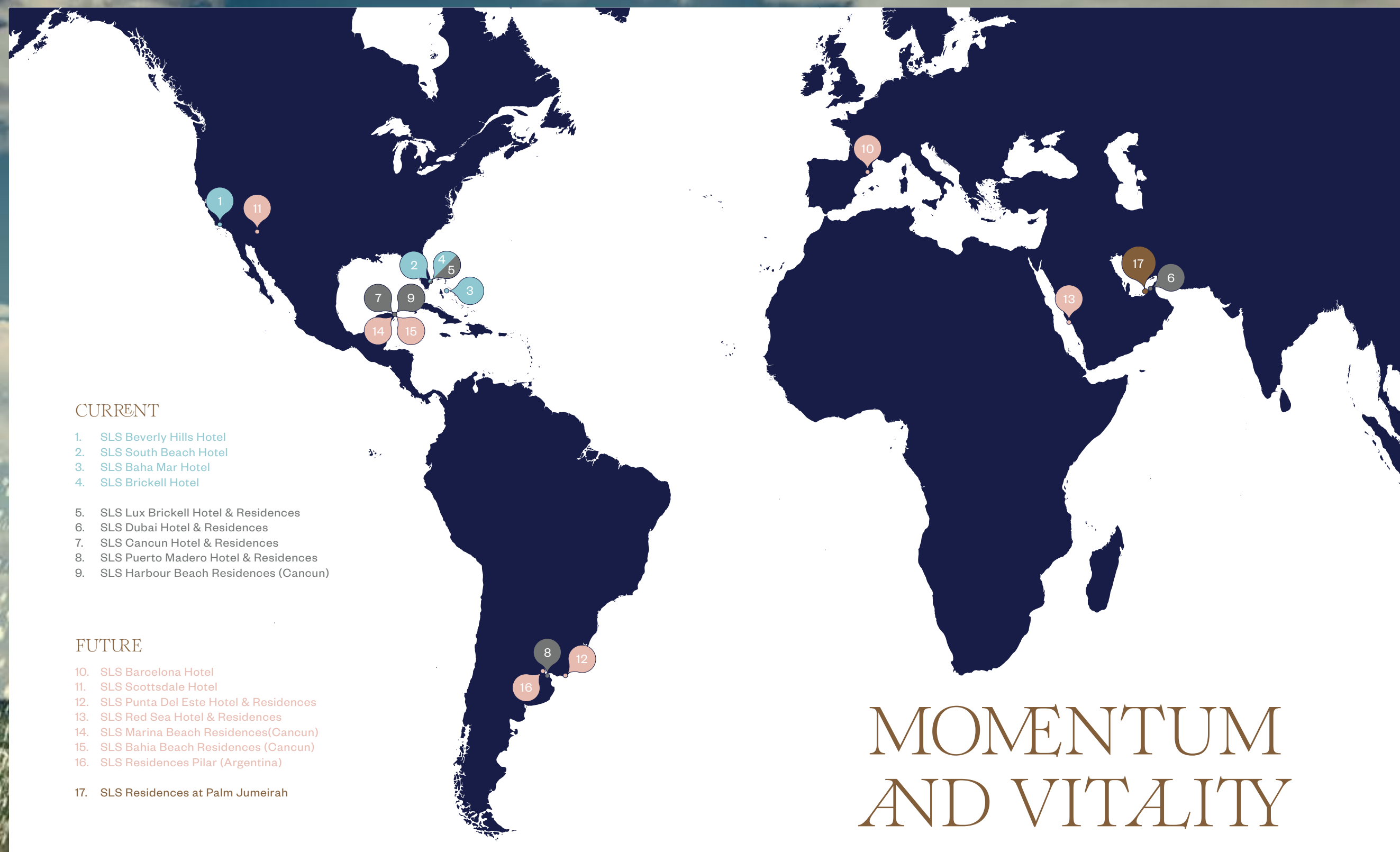




# THE WORLD OF SLS

SLS eclipses expectations of modern luxury, infusing extravagant, breathtaking experiences with signature mischievous wit and a playful ambiance. Theatrical interiors, subversive design and unrivalled indulgence are at the heart of every SLS expression, always rendered with a refined sensibility. The promise of delight extends to a level of service that is bespoke, anticipatory, and reimagines the norm.





### CURRENT

- 1. SLS Beverly Hills Hotel
- 2. SLS South Beach Hotel
- 3. SLS Baha Mar Hotel
- 4. SLS Brickell Hotel
  
- 5. SLS Lux Brickell Hotel & Residences
- 6. SLS Dubai Hotel & Residences
- 7. SLS Cancun Hotel & Residences
- 8. SLS Puerto Madero Hotel & Residences
- 9. SLS Harbour Beach Residences (Cancun)

### FUTURE

- 10. SLS Barcelona Hotel
- 11. SLS Scottsdale Hotel
- 12. SLS Punta Del Este Hotel & Residences
- 13. SLS Red Sea Hotel & Residences
- 14. SLS Marina Beach Residences(Cancun)
- 15. SLS Bahia Beach Residences (Cancun)
- 16. SLS Residences Pilar (Argentina)
  
- 17. SLS Residences at Palm Jumeirah

# MOMENTUM AND VITALITY

# INIMITABLE DESTINATIONS

When SLS arrived on the scene in 2008, it captivated guests with a wholly original experience defined by exceptional luxury. And every location opened thereafter has done the same.



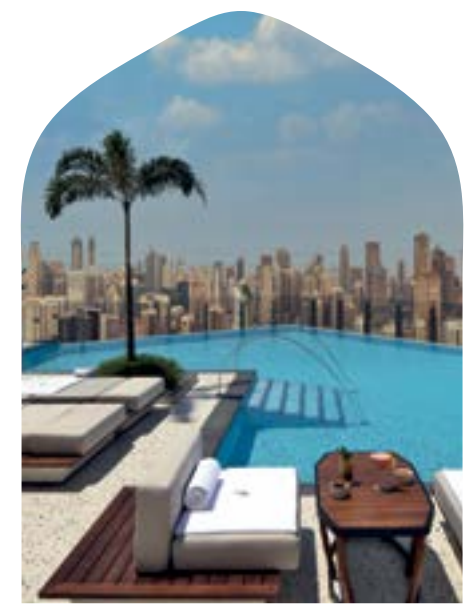
BEVERLY HILLS  
LOS ANGELES  
2008



SOUTH BEACH  
MIAMI  
2012



LUX BRICKELL  
MIAMI  
2018



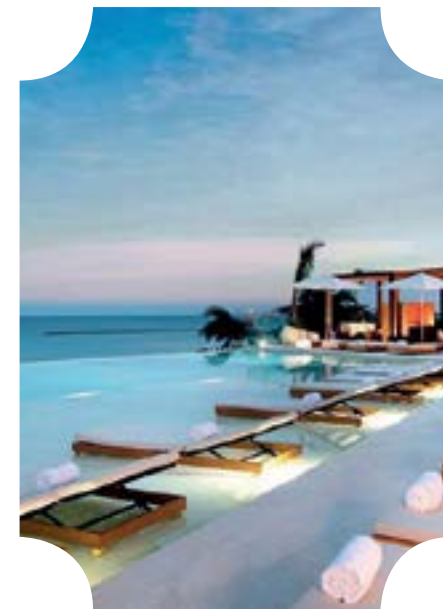
DUBAI  
UAE  
2021



BRICKELL  
MIAMI  
2016



BAHA MAR  
NASSAU  
2017



CANCUN  
MEXICO  
2021



PUERTO MADERO HARBOUR  
ARGENTINA  
2022



SLS RESIDENCES AT PALM JUMEIRAH

SLS RESIDENCES AT PALM JUMEIRAH



# THE HEART OF DUBAI

The iconic location of SLS Residences at Palm Jumeirah is unique in its ability to be centrally-located and yet entirely exclusive.

## PROXIMITY TO

- Burj Khalifa 20 minutes
- Dubai Al Makhtoum Airport 35 minutes
- Dubai International Airport 25 minutes
- Dubai Marina 15 min
- Mall of the Emirates 15 min
- Nakheel Mall 5 min
- SLS Dubai Hotel & Residences 20 minutes



# A COVETED LOCATION

SLS Residences at Palm Jumeirah is a wondrous development in a dream-like location on the tranquil shores of Palm Jumeirah's West Crescent, with sweeping views of the water, the Dubai Marina skyline and Palm Jumeirah itself.

# LIVING ON THE PALM



Imagine residing on one of the world's most beguiling landscapes, combined with cosmopolitan sophistication, stunning coastal culture, and an ease of living that is truly holistic. The Palm is not only a marvel of engineering and imagination — it's a marvel of contemporary living. As a resident of The Palm you are guaranteed privacy and security while never feeling you are on an island. On The Palm, the world is at your fingertips.





SLS RESIDENCES AT PALM JUMEIRAH - RESIDENCES CAR PARK

# FAREWELL TO THE ORDINARY

Interiors are built with double-high ceilings to enhance the elegance through a sense of spaciousness. Premium finishes are found at every turn, as are sustainable materials, natural light and greenery. The 10-story building is a statement in architectural theatre that is perfectly suited to the dynamic character of SLS.



SLS RESIDENCES AT PALM JUMEIRAH





# LIMITLESS VIEWS ABOUND

Residences boast panoramic views of The Palm Jumeirah, the Dubai skyline and the glittering Gulf. On the ground floor, just beyond the infinity pool, lies an exclusive, private beach with outdoor BBQ facilities and SUP boards for exploration.





SLS RESIDENCES AT PALM JUMEIRAH - THE STUDIO: BOUTIQUE FITNESS



SLS RESIDENCES AT PALM JUMEIRAH - THE CHEF'S TABLE



## ESSENTIAL SERVICES

SLS Essential Services are included for all to ensure a seamless, effortless resident experience, at home or away.

- Residence & Concierge
- Doormen & Valet
- Security
- Residence Owner Services
- Accor Ownership Benefits Program Annual Fee
- Common Area Maintenance
- Common Area Housekeeping
- Common Area Utilities
- Common Area Reserve for Replacement
- WI-FI internet in Residential Common Areas
- General & Administrative
- Property Insurance (Base Building/Common Areas)

Essential Services are included in the service charge.



## SLS LIFESTYLE SERVICES

A suite of on-demand services\* are on-call at a moment's notice, and are unmistakably SLS.

### THRIVE

- Chauffeur/Private Transportation
- In-Residence Housekeeping
- Household Maintenance
- Residence Caretaker
- Turnkey Maintenance
- Pre-arrival Provisioning
- Personal Assistant
- Childcare
- Pet Minding, Grooming, and Walking
- Weekly Floral Arrangements
- Plant Curation and Care

\* On-demand services available to Residence owners at an additional cost.



### STYLE

- Personal Stylist
- Personal Shopper
- Private Jeweller
- Glam Squad (hair, make-up, nails, grooming)
- Dry Cleaning, Laundry, and Tailoring
- Wardrobe Organization, Storage, and Archiving
- Interior Designer

### PLAY

- Event & Party Planning and Production
- Private Dining in The Social House
- In-Residence Personal Chef
- In-Residence Mixologist or Sommelier
- Beach Picnic Kit
- Photographer
- Fitness Consultant with Personalized Program
- Nutrition and Wellness Advisor
- Spiritual Advisor

\* On-demand services available to Residence owners at an additional cost.



SLS RESIDENCES AT PALM JUMEIRAH - THE SOCIAL HOUSE



# GLOBAL VVIP STATUS FOR SLS OWNERS

Residence owners are eligible to participate in the Accor Ownership Benefits Program\*, affording them VVIP status globally.

Exclusive invitation to join DIAMOND status in ALL – Accor Live Limitless loyalty program and gifting of a GOLD status to a family or friend.



VIP reservation desk to support travel planning across a global network of participating hotels, resorts, and related hospitality offerings under ALL – Accor Live Limitless, including, amongst others, iconic luxury brands such as Raffles, Fairmont, Sofitel, Faena and Delano.



Automatic upgrades on arrival across more than 5,500 hotels and resorts worldwide (subject to availability).\*\*



20% off the best available rate worldwide at participating hotels under ALL – Accor Live Limitless.



On-site benefits and privileges.

\* Eligibility continues for as long as the purchaser owns Accor branded real estate, subject to the annual Residence Ownership Benefits Fee being included in the property service charge assessed to all Residence owners.

\*\* At participating Accor brands and properties.



SLS RESIDENCES AT PALM JUMEIRAH - THE SOCIAL HOUSE

# BEACH BAROQUE INTERIORS

Renowned interior design firm Studio Carter has conjured a wonderland that brings a natural sensibility to beautifully ornate and opulent designs without tempering its glamorous allure.



SLS RESIDENCES AT PALM JUMEIRAH - THE SOCIAL HOUSE

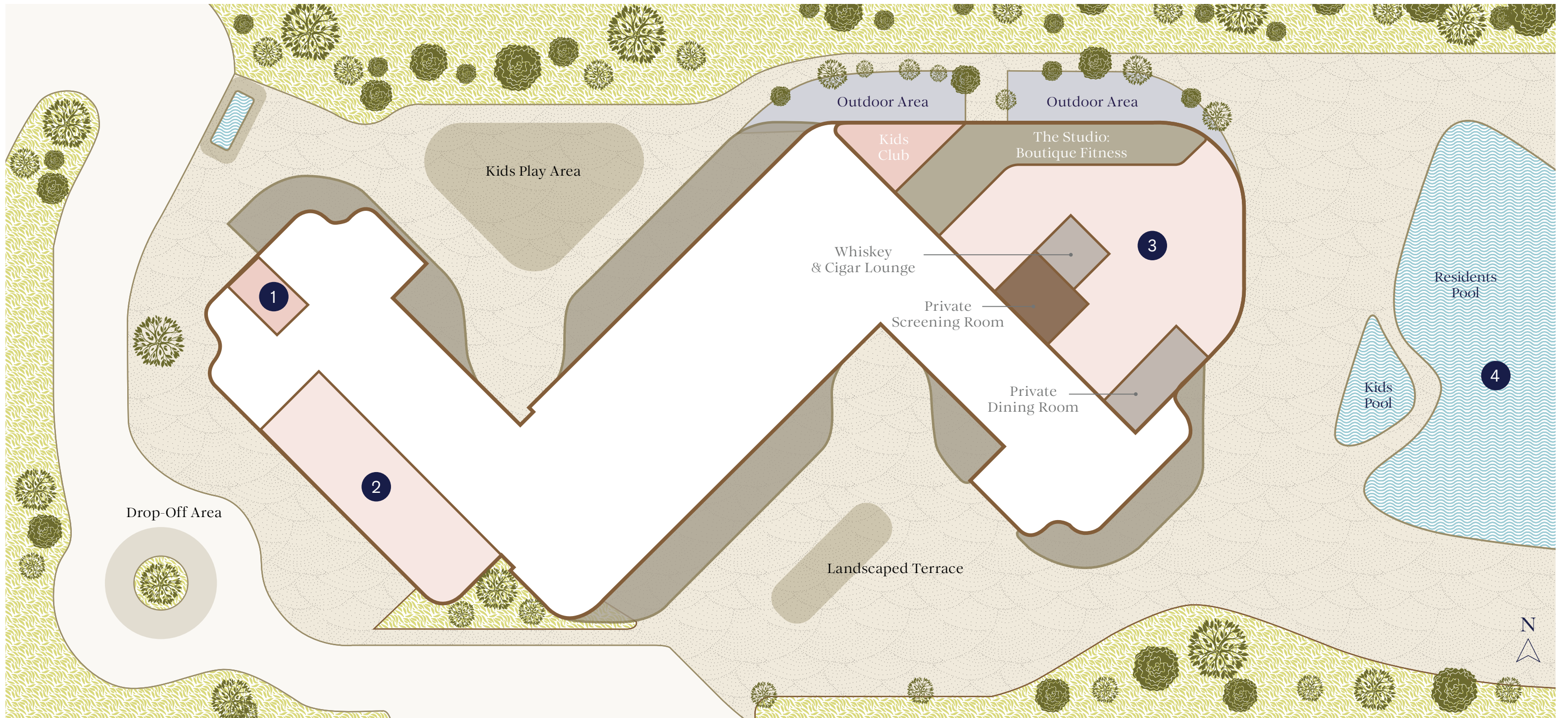


“SLS Residences at Palm Jumeirah infuses the beach with unparalleled beauty. A beach baroque wonderland floating over the ocean with a sense of grandeur, offering views of The Palm framed by exquisite detail, blending together elegance and drama.”



Robbyn Carter, Founder, Studio Carter

SLS RESIDENCES AT PALM JUMEIRAH - RESIDENTS POOL



# MASTERPLAN

The imaginative landscaping of the gardens and public spaces has been conceived by Cracknell, a global firm recognised for their landscape architecture, planning, and urban design capability.

## 1. Guesthouse Suite

## 2. Lobby & Arrival

- Arrival Lobby
- Reception
- Concierge
- Meeting Room

## 3. The Social House

- Chef's Table
- Boardroom & Private Dining Room
- High-End Games Area
- Screening Room
- The Studio: Boutique Fitness
- Outdoor Gym Space
- Treatment Rooms

## 4. Pool & Beachfront

- Residents Pool
- Kids Pool
- BBQ Area
- Stand Up Paddle Board Storage





SLS RESIDENCES AT PALM JUMEIRAH

SLS RESIDENCES AT PALM JUMEIRAH



SLS RESIDENCES AT PALM JUMEIRAH - POOL DECK

# THE RESIDENCES

The 113 private Residences are comprised of varying layouts, configurations and sizes, with a unit to suit every residential need.





THREE BEDROOM RESIDENCE - LIVING ROOM

# 2 BEDROOM SIMPLEX TYPE 1

Suite Area:  
163.75 m<sup>2</sup>  
1,422.00 sq ft

Balcony Area:  
25.53 m<sup>2</sup>  
274.00 sq ft

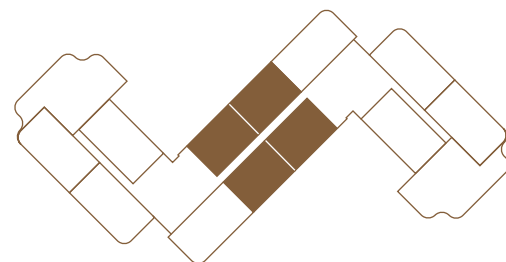
Total Area:  
157.61 m<sup>2</sup>  
1,696.00 sq ft

- |                   |                   |                     |
|-------------------|-------------------|---------------------|
| 1. Master Bedroom | 5. Ensuite        | 9. Powder Room      |
| 2. Master Ensuite | 6. Maid's Bedroom | 10. Foyer           |
| 3. Walk in Robe   | 7. Maid's WC      | 11. Show Kitchen    |
| 4. Second Bedroom | 8. Balcony        | 12. Living & Dining |



## Keyplan

Ground Floor / 1<sup>st</sup> / 2<sup>nd</sup> / 3<sup>rd</sup> / 4<sup>th</sup> / 5<sup>th</sup> / 6<sup>th</sup> / 7<sup>th</sup> / 8<sup>th</sup>



SCALE  
~10 Meters

All dimensions are in imperial and metric, and measured from finish to finish excluding construction tolerances. 2. All materials, dimensions, and drawings are approximate only. 3. Information is subject to change without notice, at developer's absolute discretion. 4. Actual area may vary from the stated area. 5. Drawings not to scale. 6. All images used are for illustrative purposes only and do not represent the actual size, features, specifications, fittings, and furnishings. 7. The developer reserves the right to make revisions / alterations, at its absolute discretion, without any liability whatsoever.

# 2 BEDROOM SIMPLEX TYPE 2

Suite Area:  
173.16 m<sup>2</sup>  
1,864.00 sq ft

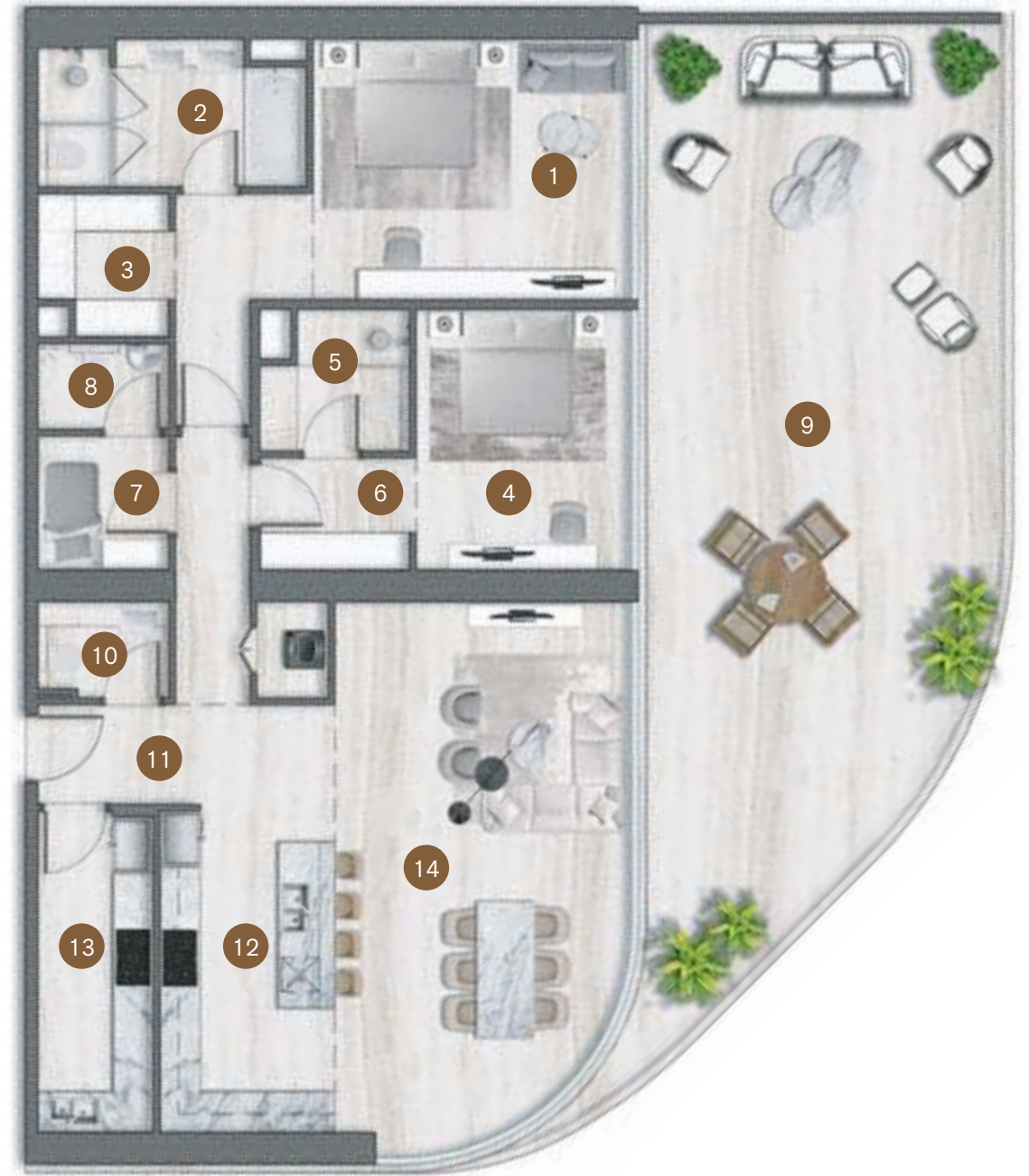
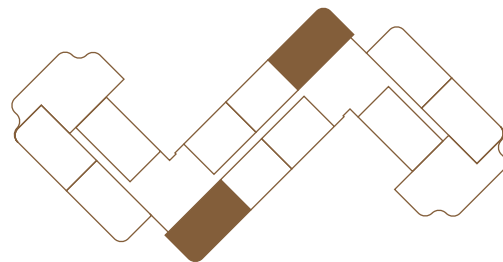
Balcony Area:  
79.86 m<sup>2</sup>  
859.00 sq ft

Total Area:  
253.02 m<sup>2</sup>  
2,723.00 sq ft

- |                   |                   |                     |
|-------------------|-------------------|---------------------|
| 1. Master Bedroom | 6. Walk in Robe   | 11. Foyer           |
| 2. Master Ensuite | 7. Maid's Bedroom | 12. Show Kitchen    |
| 3. Walk in Robe   | 8. Maid's WC      | 13. Wet Kitchen     |
| 4. Second Bedroom | 9. Balcony        | 14. Living & Dining |
| 5. Ensuite        | 10. Powder Room   |                     |

## Keyplan

Ground Floor / 1<sup>st</sup> / 2<sup>nd</sup> / 3<sup>rd</sup> / 4<sup>th</sup> / 5<sup>th</sup> / 6<sup>th</sup> / 7<sup>th</sup> / 8<sup>th</sup>



SCALE  
~10 Meters

All dimensions are in imperial and metric, and measured from finish to finish excluding construction tolerances. 2. All materials, dimensions, and drawings are approximate only. 3. Information is subject to change without notice, at developer's absolute discretion. 4. Actual area may vary from the stated area. 5. Drawings not to scale. 6. All images used are for illustrative purposes only and do not represent the actual size, features, specifications, fittings, and furnishings. 7. The developer reserves the right to make revisions / alterations, at its absolute discretion, without any liability whatsoever.



Generous His & Hers walk-in wardrobes are elegantly designed as a functional yet inspiring showcase for exquisite pieces. Bronze metal insets bring a luxe sensibility to soft, plaster-finish walls, set against a warm-hued solid walnut floor.



Royal beige marble vanity and flooring set an opulent tone in this primary bath that carries into every facet. The bronze-framed mirror is intricately etched with ornate framing matched only by the visual interest created in ribbed glass doors that fracture light and are lined in a gleaming polished chrome.

# 3 BEDROOM SIMPLEX TYPE 1

Suite Area:  
172.82 m<sup>2</sup>  
1,860.00 sq ft

Balcony Area:  
38.28 m<sup>2</sup>  
412.00 sq ft

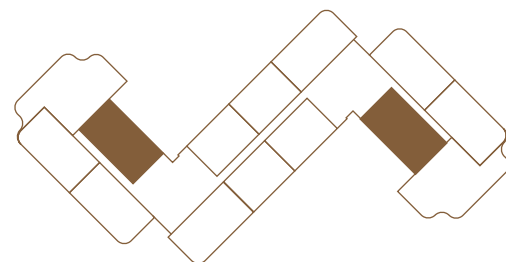
Total Area:  
211.10 m<sup>2</sup>  
2,272.00 sq ft

- |                   |                    |                          |
|-------------------|--------------------|--------------------------|
| 1. Master Bedroom | 7. Third Bedroom   | 13. Powder Room          |
| 2. Ensuite        | 8. Ensuite         | 14. Foyer                |
| 3. Walk in Robe   | 9. Wardrobes       | 15. Show Kitchen         |
| 4. Second Bedroom | 10. Maid's Bedroom | 16. Living & Dining Area |
| 5. Ensuite        | 11. Maid's WC      | 17. Terrace              |
| 6. Wardrobes      | 12. Laundry        |                          |



## Keyplan

Ground Floor / 1<sup>st</sup> / 2<sup>nd</sup> / 3<sup>rd</sup> / 4<sup>th</sup> / 5<sup>th</sup> / 6<sup>th</sup> / 7<sup>th</sup> / 8<sup>th</sup>



SCALE  
~10 Meters

All dimensions are in imperial and metric, and measured from finish to finish excluding construction tolerances. 2. All materials, dimensions, and drawings are approximate only. 3. Information is subject to change without notice, at developer's absolute discretion. 4. Actual area may vary from the stated area. 5. Drawings not to scale. 6. All images used are for illustrative purposes only and do not represent the actual size, features, specifications, fittings, and furnishings. 7. The developer reserves the right to make revisions / alterations, at its absolute discretion, without any liability whatsoever.

# 3 BEDROOM SIMPLEX TYPE 2

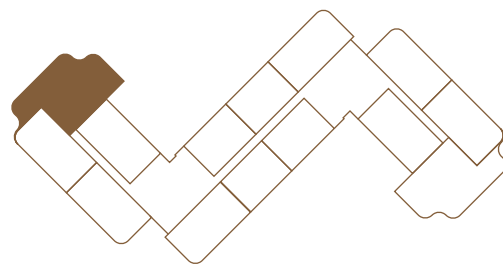
Suite Area:  
254.45 m<sup>2</sup>  
2,739.00 sq ft

Balcony Area:  
122.34 m<sup>2</sup>  
1,317.00 sq ft

Total Area:  
376.79 m<sup>2</sup>  
4,056.00 sq ft

- |                   |                   |                          |
|-------------------|-------------------|--------------------------|
| 1. Master Bedroom | 7. Ensuite        | 13. Show Kitchen         |
| 2. Master Ensuite | 8. Maid's Bedroom | 14. Wet Kitchen          |
| 3. Walk in Robe   | 9. Maid's WC      | 15. Living & Dining Area |
| 4. Second Bedroom | 10. Laundry       | 16. Terrace              |
| 5. Ensuite        | 11. Powder Room   |                          |
| 6. Third Bedroom  | 12. Foyer         |                          |

Keyplan  
Ground Floor / 1<sup>st</sup>



SCALE  
~10 Meters

All dimensions are in imperial and metric, and measured from finish to finish excluding construction tolerances. 2. All materials, dimensions, and drawings are approximate only. 3. Information is subject to change without notice, at developer's absolute discretion. 4. Actual area may vary from the stated area. 5. Drawings not to scale. 6. All images used are for illustrative purposes only and do not represent the actual size, features, specifications, fittings, and furnishings. 7. The developer reserves the right to make revisions / alterations, at its absolute discretion, without any liability whatsoever.





FOUR BEDROOM RESIDENCE - DINING ROOM

# 3 BEDROOM DUPLIX

Suite Area:  
303.72 m<sup>2</sup>  
3,269.00 sq ft

Balcony Area:  
86.8 m<sup>2</sup>  
934.00 sq ft

Total Area:  
390.52 m<sup>2</sup>  
4,204.00 sq ft

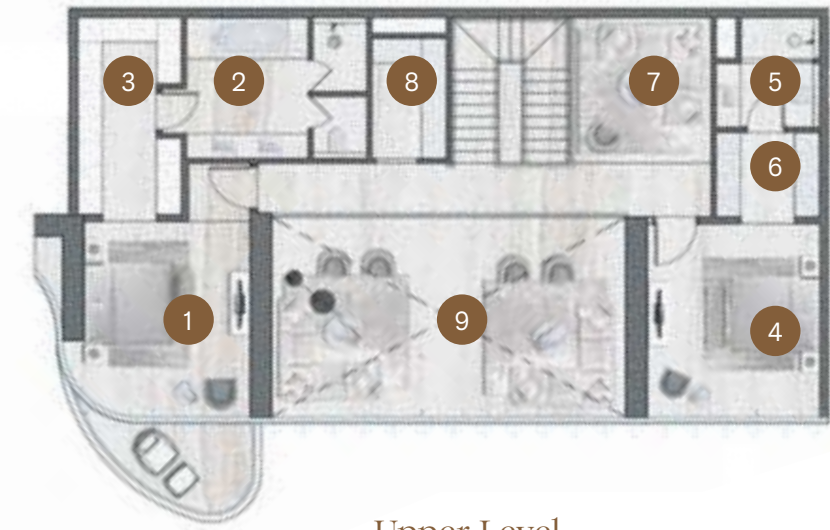
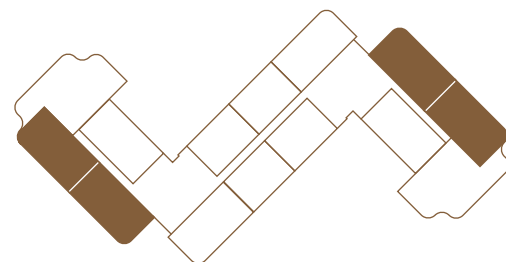
## Upper Level

## Lower Level

1. Master Bedroom	7. Family Room	10. Wet Kitchen	17. Pool Area
2. Ensuite	8. Pantry	11. Show Kitchen & Dining	18. Maid's Bedroom
3. Walk in Robe	9. Void	12. Foyer	19. Maid's WC
4. Second Bedroom		13. Balcony	20. Laundry
5. Ensuite		14. Powder Room	21. Third Bedroom
6. Walk in Robe		15. Wash Room	22. Walk in Robe
		16. Living Area	23. Ensuite

### Keyplan

Ground Floor / 2<sup>nd</sup> / 4<sup>th</sup> / 6<sup>th</sup> / 8<sup>th</sup>



Upper Level



Lower Level

SCALE

~10 Meters

All dimensions are in imperial and metric, and measured from finish to finish excluding construction tolerances. 2. All materials, dimensions, and drawings are approximate only. 3. Information is subject to change without notice, at developer's absolute discretion. 4. Actual area may vary from the stated area. 5. Drawings not to scale. 6. All images used are for illustrative purposes only and do not represent the actual size, features, specifications, fittings, and furnishings. 7. The developer reserves the right to make revisions / alterations, at its absolute discretion, without any liability whatsoever.



# 3 BEDROOM PENTHOUSE

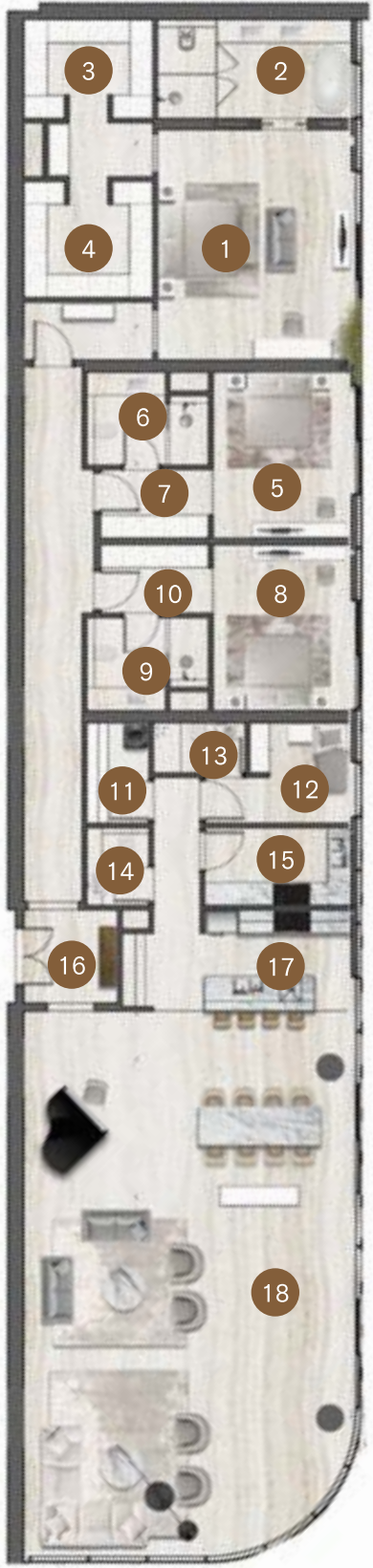
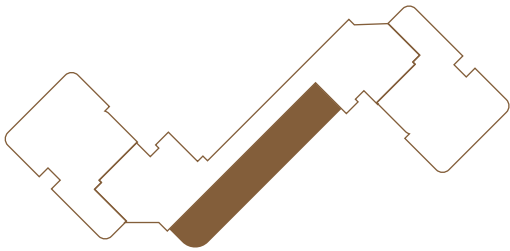
Suite Area:  
341.95 m<sup>2</sup>  
3,681.00 sq ft

Balcony Area:  
269.49 m<sup>2</sup>  
2,900.00 sq ft

Total Area:  
611.44 m<sup>2</sup>  
6,581.00 sq ft

- |                     |                    |                          |
|---------------------|--------------------|--------------------------|
| 1. Master Bedroom   | 8. Third Bedroom   | 15. Wet Kitchen          |
| 2. Master Bathroom  | 9. Ensuite         | 16. Foyer                |
| 3. Her Walk in Robe | 10. Wardrobes      | 17. Show Kitchen         |
| 4. His Walk in Robe | 11. Laundry        | 18. Living & Dining Area |
| 5. Second Bedroom   | 12. Maid's Bedroom | 19. Dining Terrace       |
| 6. Ensuite          | 13. Maid's WC      | 20. Terrace              |
| 7. Wardrobes        | 14. Powder Room    | 21. Shadow Pond          |

Keyplan  
Roof Floor



SCALE  
~10 Meters

All dimensions are in imperial and metric, and measured from finish to finish excluding construction tolerances. 2. All materials, dimensions, and drawings are approximate only. 3. Information is subject to change without notice, at developer's absolute discretion. 4. Actual area may vary from the stated area. 5. Drawings not to scale. 6. All images used are for illustrative purposes only and do not represent the actual size, features, specifications, fittings, and furnishings. 7. The developer reserves the right to make revisions / alterations, at its absolute discretion, without any liability whatsoever.



The spacious bathtub is crafted in the same royal beige marble that adorns the flooring and vanity and sits under soft lighting, inset in the plaster-finished ceiling.

Warm-hued solid walnut flooring carries throughout the primary bedroom, opposite a bevelled, bronze-framed mirror etched with a pattern that is suspended from the ceiling.





FOUR BEDROOM RESIDENCE - TERRACE

# 4 BEDROOM DUPLEX

Suite Area:  
437.41m<sup>2</sup>  
4,708.00 sq ft

Balcony Area:  
126.61m<sup>2</sup>  
1,363.00 sq ft

Total Area:  
564.02 m<sup>2</sup>  
6,071.00 sq ft

## Upper Level

- 1. Master Bedroom
- 2. Ensuite
- 3. Her Walk In Robe
- 4. His Walk In Robe
- 5. Second Bedroom
- 6. Ensuite
- 7. Wardrobes

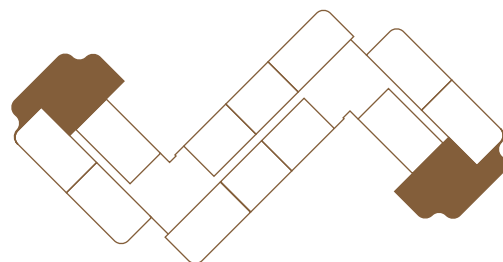
- 8. Third Bedroom
- 9. Ensuite
- 10. Balcony

- 11. Fourth Bedroom
- 12. Ensuite
- 13. Walk in Robe
- 14. Maid's Bedroom
- 15. Maid's WC
- 16. Laundry
- 17. Pantry
- 18. Utility

- 19. Foyer
- 20. Powder Room
- 21. Wet Kitchen
- 22. Show Kitchen
- 23. Dining Area
- 24. Living Room
- 25. Balcony
- 26. Pool Area

## Keyplan

Ground Floor / 2<sup>nd</sup> / 4<sup>th</sup> / 6<sup>th</sup> / 8<sup>th</sup>



Upper Level



Lower Level

SCALE

~10 Meters

All dimensions are in imperial and metric, and measured from finish to finish excluding construction tolerances. 2. All materials, dimensions, and drawings are approximate only. 3. Information is subject to change without notice, at developer's absolute discretion. 4. Actual area may vary from the stated area. 5. Drawings not to scale. 6. All images used are for illustrative purposes only and do not represent the actual size, features, specifications, fittings, and furnishings. 7. The developer reserves the right to make revisions / alterations, at its absolute discretion, without any liability whatsoever.



THE SOCIAL HOUSE - POOL

# 4 BEDROOM PENTHOUSE

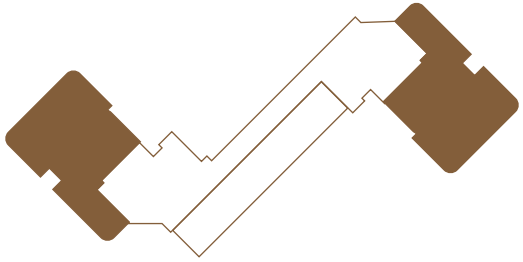
Suite Area:  
344.74 m<sup>2</sup>  
3,711.00 sq ft

Balcony Area:  
952.36 m<sup>2</sup>  
10,251.00 sq ft

Total Area:  
1297.10 m<sup>2</sup>  
13,962.00 sq ft

- |                           |                       |                              |
|---------------------------|-----------------------|------------------------------|
| 1. Master Bedroom         | 9. Ensuite & Wardrobe | 17. Foyer                    |
| 2. Ensuite                | 10. Maid's Bedroom    | 18. Dining & Show Kitchen    |
| 3. His & Her Walk in Robe | 11. Maid's WC         | 19. Living Area              |
| 4. Second Bedroom         | 12. Laundry           | 20. Terrace Seating          |
| 5. Ensuite & Wardrobe     | 13. Wet Kitchen       | 21. Terrace                  |
| 6. Third Bedroom          | 14. Courtyard         | 22. Fire Pit                 |
| 7. Ensuite & Wardrobe     | 15. Family Room       | 23. Terrace Dining Area      |
| 8. Fourth Bedroom         | 16. Powder Room       | 24. Sun Loungers & Pool Area |

Keyplan  
Roof Floor



SCALE  
~10 Meters

All dimensions are in imperial and metric, and measured from finish to finish excluding construction tolerances. 2. All materials, dimensions, and drawings are approximate only. 3. Information is subject to change without notice, at developer's absolute discretion. 4. Actual area may vary from the stated area. 5. Drawings not to scale. 6. All images used are for illustrative purposes only and do not represent the actual size, features, specifications, fittings, and furnishings. 7. The developer reserves the right to make revisions / alterations, at its absolute discretion, without any liability whatsoever.



# A REFINED LIFESTYLE DEVELOPER

Roya is at the forefront of luxury real estate development with headquarters in Dubai, bringing together over 30 years of expertise in the private and public sectors to create ultra-luxury residences fit for refined lifestyles. With a focus on innovative design and quality construction, we bring together craftsmanship and contemporary aesthetics to deliver unique living experiences. Our passion for excellence drives us to provide our clients with world-class customer service and support throughout the entire process - from purchase to occupancy.





# A CREATIVE HOSPITALITY COMPANY

Ennismore is a creative hospitality company with a global collective of entrepreneurial and founder-built brands. It curates and manages unique properties and experiences in some of the most exciting destinations worldwide. Founded in 2011 by entrepreneur Sharan Pasricha, Ennismore and Accor entered a joint venture in 2021 to create a new autonomous entity, with Accor holding a majority shareholding.

Creating the world's fastest-growing lifestyle hospitality company, it brings together Ennismore's know-how in building brands with creative storytelling, design, and authentic experiences, with Accor's wealth of knowledge in delivering scale, network growth and distribution. And it also brings together over two decades of experience managing branded residences around the world, with approximately 140 branded residences that have opened or are in the pipeline.





S L S